

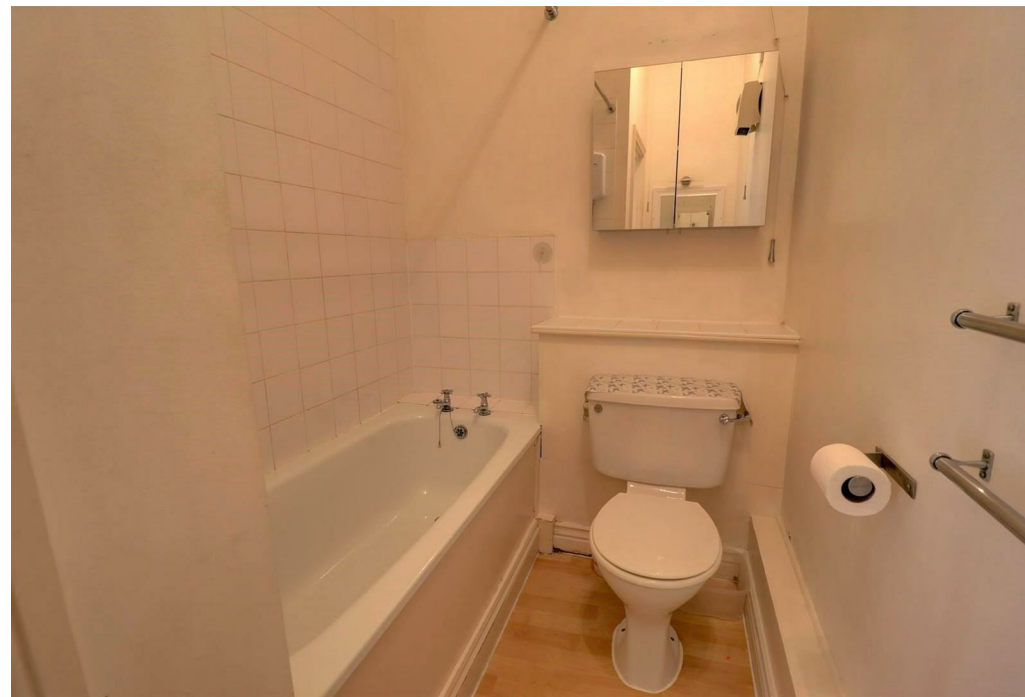
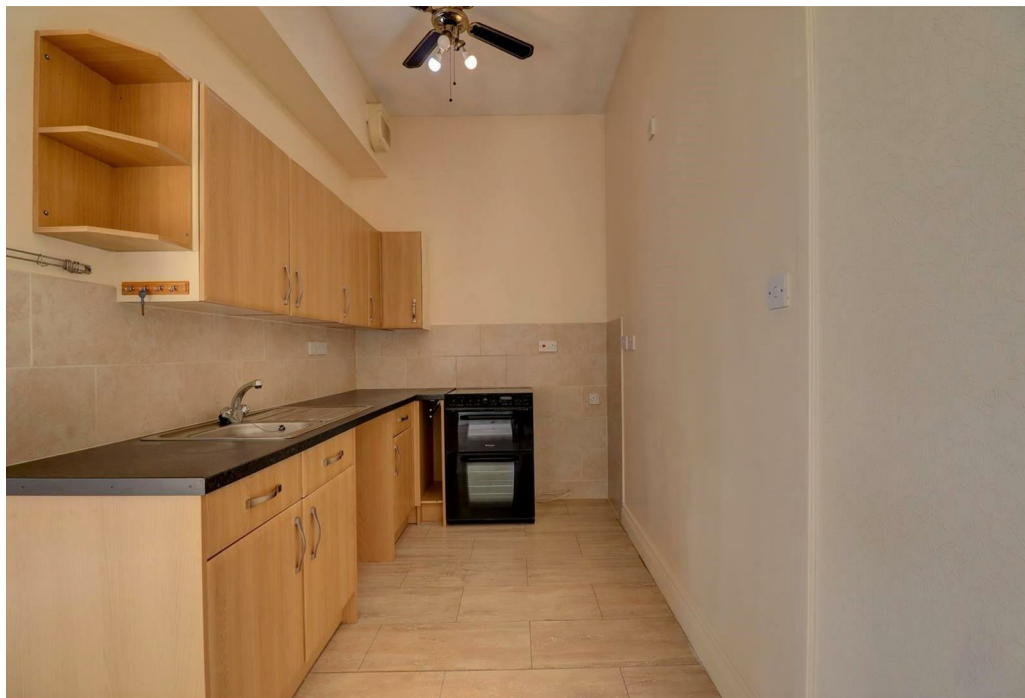


St. Christopher Court, Evesham, WR11 4LL

Property Description

*** AVAILABLE NOW - DEPOSIT ALTERNATIVE AVAILABLE *** This newly decorated two bedroom first floor flat is situated close to the train station which has a direct line to London Paddington and Worcester, with shops close by and good road links. The accommodation briefly comprises: communal entrance hall with door entry phone, living room with natural light, kitchen area with a range of fitted units with spaces for fridge freezer and washing machine, one double, one single bedroom and bathroom with full suite including shower over bath. The property benefits from the Environment system and has one car parking space. Council Tax Band A. Energy Rating E. Initial 12 Month Tenancy.





Key Features

- AVAILABLE NOW - DEPOSIT ALTERNATIVE AVAILABLE
- Evesham
- 2 Bedrooms
- First Floor Flat
- Unfurnished
- One Parking Space
- Newly Decorated
- Council Tax Band A
- Energy Rating E
- Initial 12 Month Tenancy

£695 PCM